

5 DESIGNERS' OWN HOMES

# athome

IN FAIRFIELD COUNTY

# decorate!

**BOOKS**  
RUGS  
**PARTIES**  
KITCHEN  
**BATH**  
and

**A-LIST FINALISTS**  
ANNOUNCED!

**CALIFORNIA**  
**STYLE**  
**COMES**  
**EAST**

[INSIDE AN OLD GREENWICH FAMILY HOUSE]

\$5.95

SEPT/OCT 2014  
WWW.ATHOMEFC.COM

ATHOME WITH  
ALEXA HAMPTON



# sandra morgan







A variety of decorative tassels add punctuation to otherwise bare keys and knobs around the designer's home. "They're a typical European touch," says Sandra. The white ceramic basket beneath the portrait was picked up in Venice. **opposite:** A mix of chairs surround the dining table. A checkered fabric is a playful addition to the back of an antique armchair.

#### Who lives in this house?

I share our home with my husband and our adorable Shihtzu, Tiger, to whom we are both ridiculously devoted!

#### How long have you lived here?

We have lived in this house for the past sixteen years.

#### Tell me about the history of the house.

Our white brick house, built in 1930, has a strong French spirit, with its flat façade, hipped roof,

raised stone entrance, and ironwork railings. Natural light flows through the interiors all times of day, since the house faces south. The windows are large, and the floor plan is very open. Light is also reflected off the whitewashed floors throughout. The graceful swooping staircase occupies the central point and is great for making a dramatic entrance! It reinforces the simplicity and symmetry of the architectural plan.

#### What's the newest piece?

Our mirrored coffee table in the living room. It adds sparkle and modern glamour to the space.

#### What's the oldest piece?

The eighteenth-century Italian carved desk used in our dining room. It has so much character and history!

#### Where did you find the mirror over the fireplace?

The Louis XIV mirror is a family heirloom found in Paris in 1922.

#### Describe your style in three words.

Eclectic, fresh, and artful.

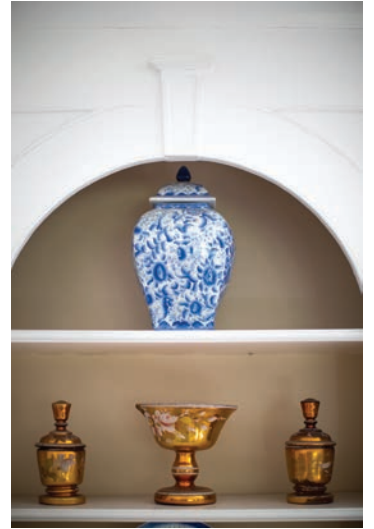
#### Describe your home in three words.

Magical, welcoming, and romantic.

#### Why blue and white?

I have collected blue-and-white porcelain for the past thirty years. It enhances all periods and styles, and combined with our white upholstered and painted









*Tiger strikes a pose in Sandra's ethereal living room. opposite: The antique red opium box sitting below the gilt mirror is also a family heirloom—"Needless to say, it is no longer used!" says the designer. Her small still-life pear painting was a birthday gift, painted by her daughter-in-law, Paula Morgan. "I love looking at it every day," says Sandra. "The colors and shape are so perfect!"*

furniture, it reminds me of the beautiful pristine country houses in Sweden.

**How is decorating your own spaces different from working on a client's home?**

Designing for myself, I am free to choose what I love and express a truly personal style, combining my favorite possessions collected over the years with intriguing new finds that have caught my eye more recently.

**Is there a story behind the console in the dining room?**

The console is my favorite piece of furniture in the house. I designed

it for a show house and asked two talented artists to create it. My cabinet-maker built it and installed the blue-and-white tile top, and my decorative painter applied the aged ivory finish and the elegant blue brushwork detail on the apron and legs.

**What is the biggest design challenge you face in your own space?**

My biggest design challenge is to declutter and part with the stacks of old magazines filled with interiors that continue to offer inspiration. I was a magazine editor early on and developed an addiction to stunning rooms

photographed at their best.

**Do you know that dashing young man in the painting in the dining room?**

He was a Spanish gentleman captured on canvas by the artist Claggett Wilson. It was done for the cover of *Town & Country* magazine in 1926.

**What's your favorite memory in this house?**

The candlelit Christmas Eve when a blizzard prevented all our family from driving home after dinner. We had a fabulous slumber party, all thirteen of us, as the snow kept falling and Santa flew over the roof

in his sleigh! The next morning delicious pancakes were flying off the griddle!

**If you could change one thing about your house, what would it be?**

I would remove the new house just built behind us!

*Sandra Morgan Interiors, Inc.,  
Greenwich, 203-629-8121,  
sandrasmorganinteriors.com*